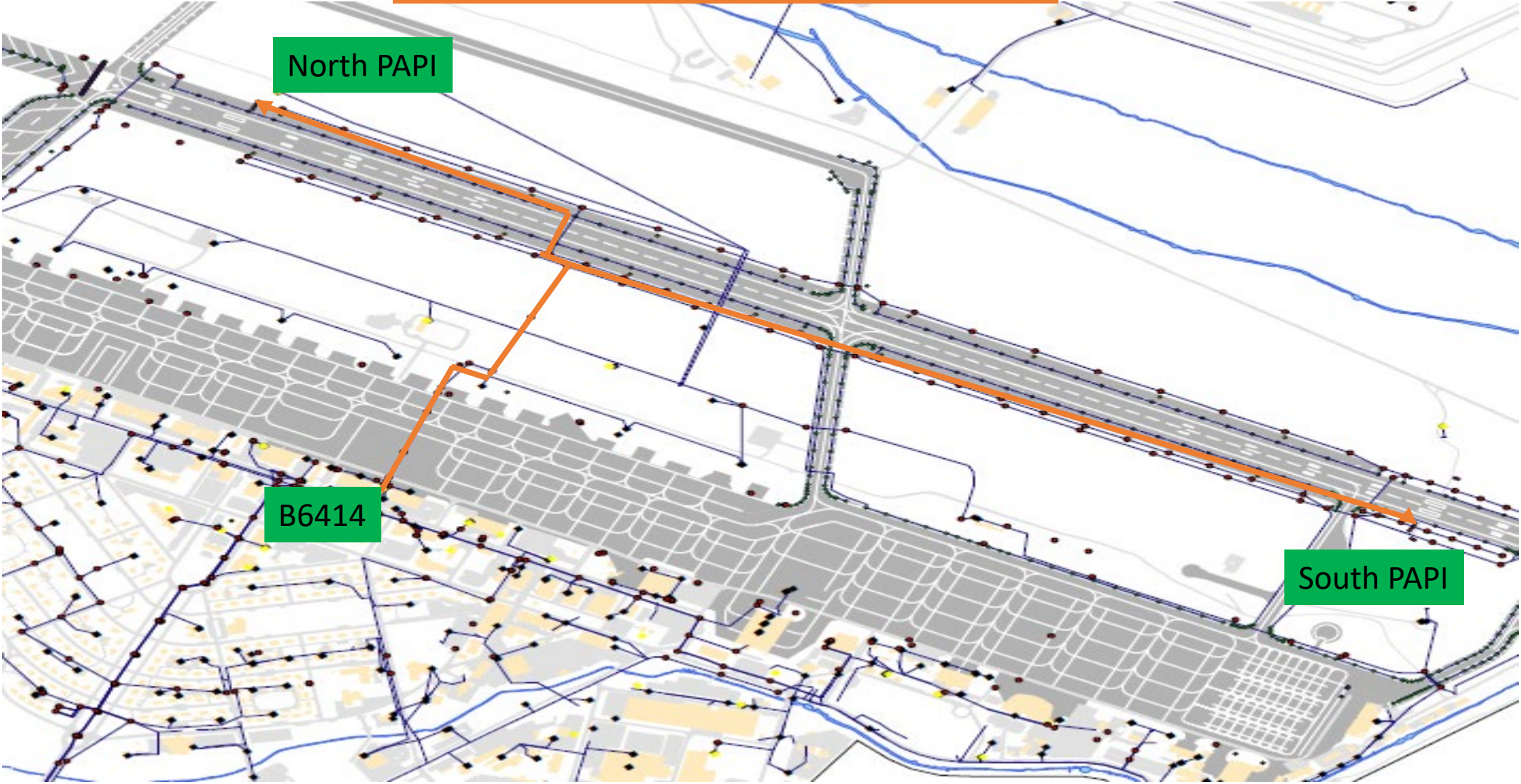
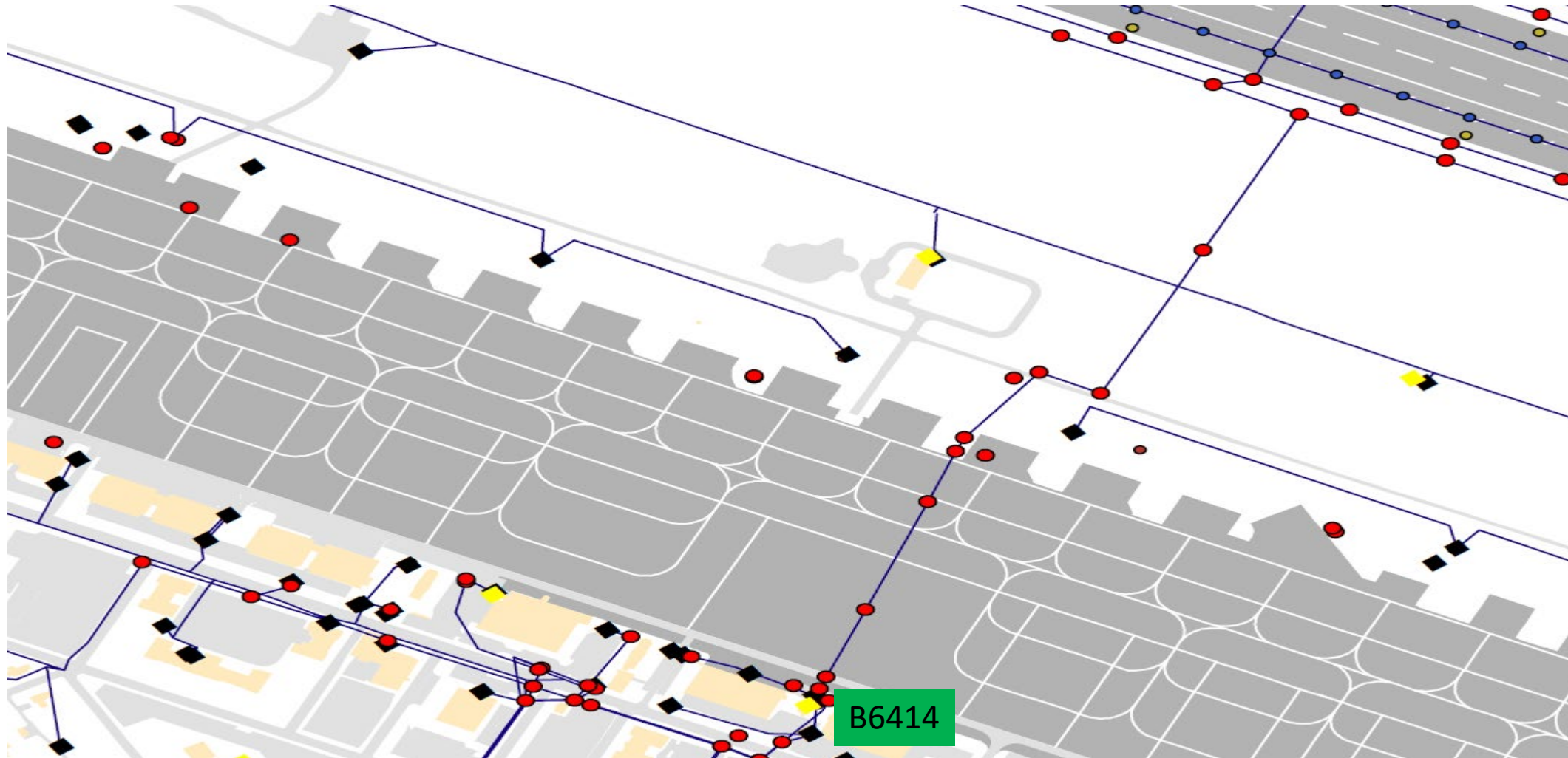
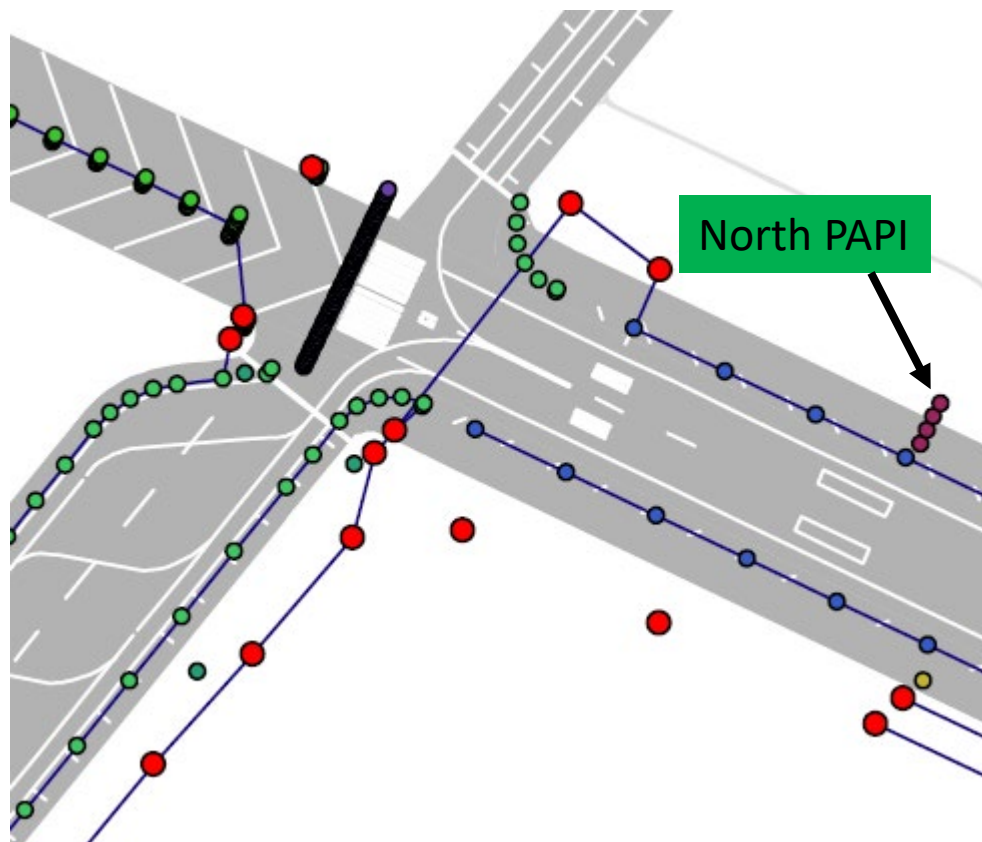


# PAPI Regulator Relocation to Vault - Overview

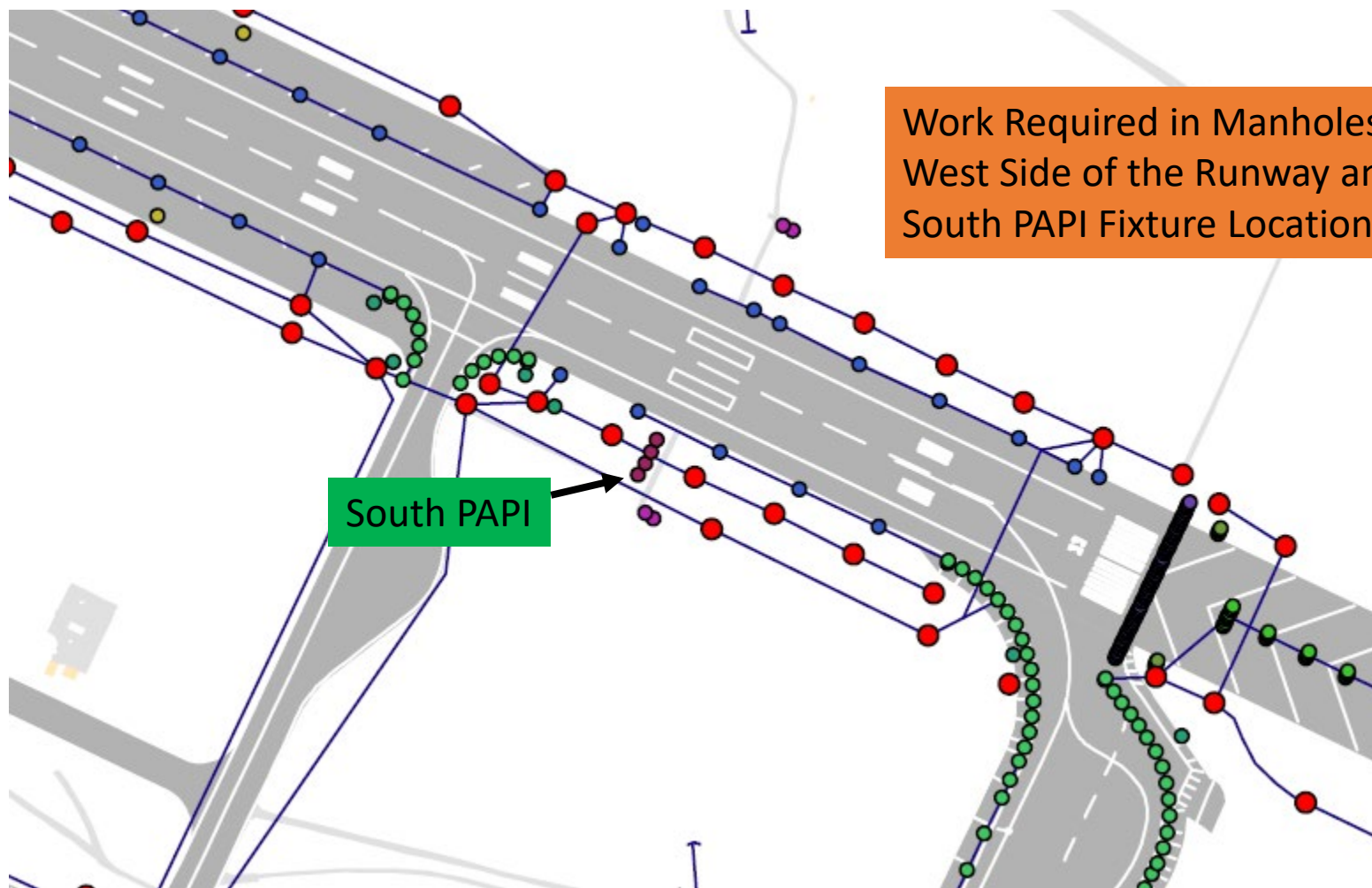


### Work Required in the Manholes Between B6414 & the Runway



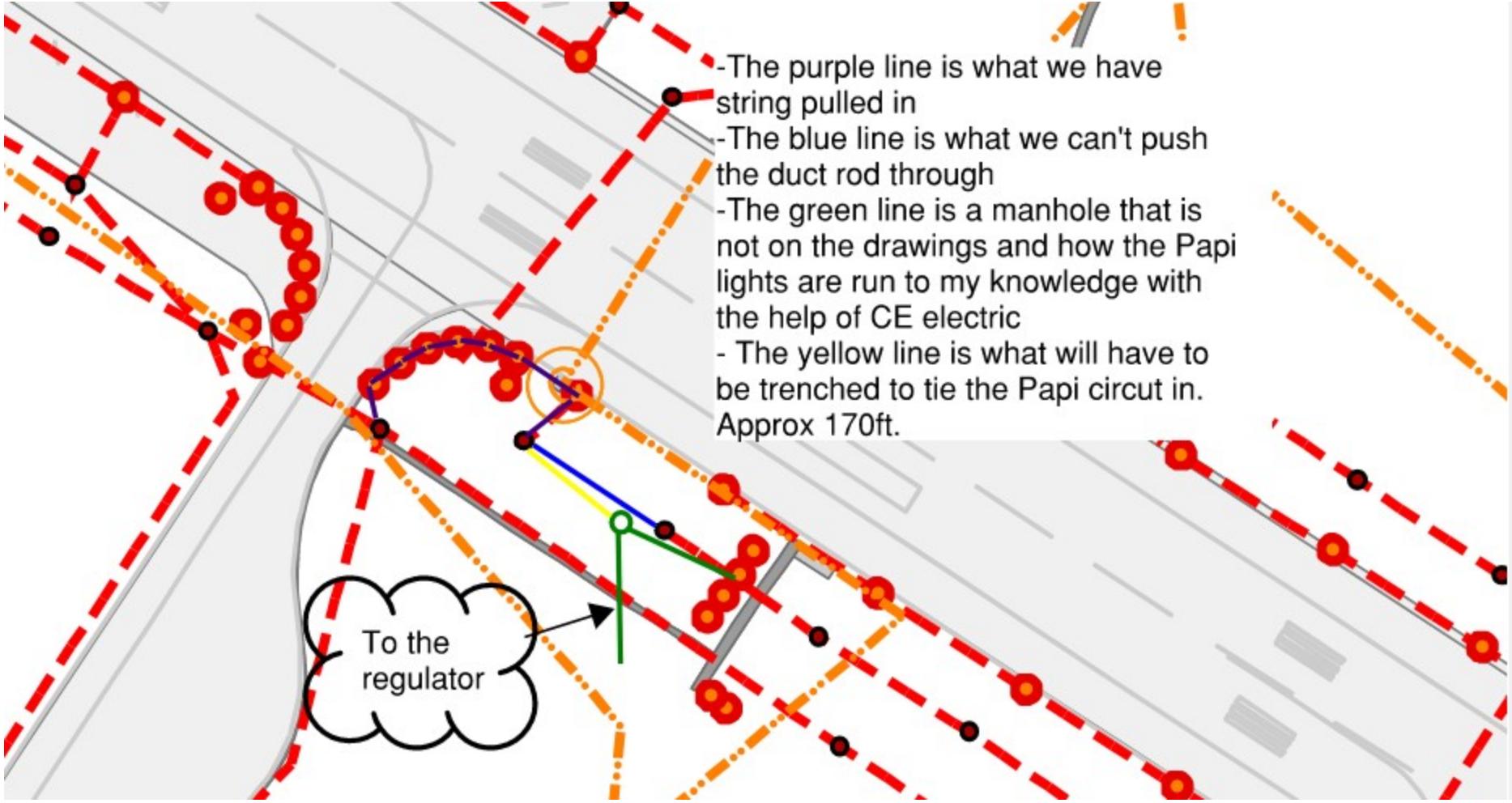


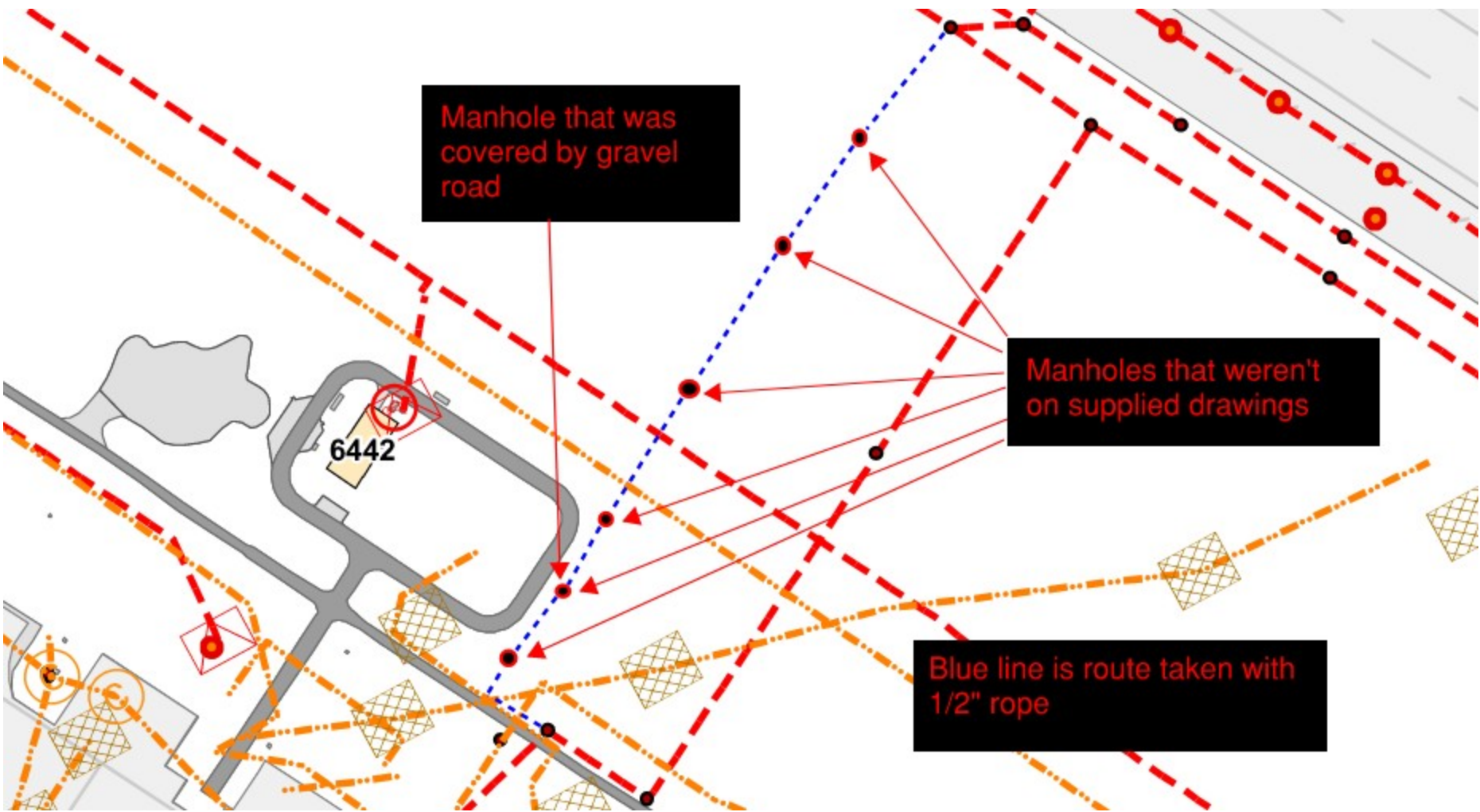
Work Required in Manholes Along the East Side of Runway and at North PAPI Fixture Location

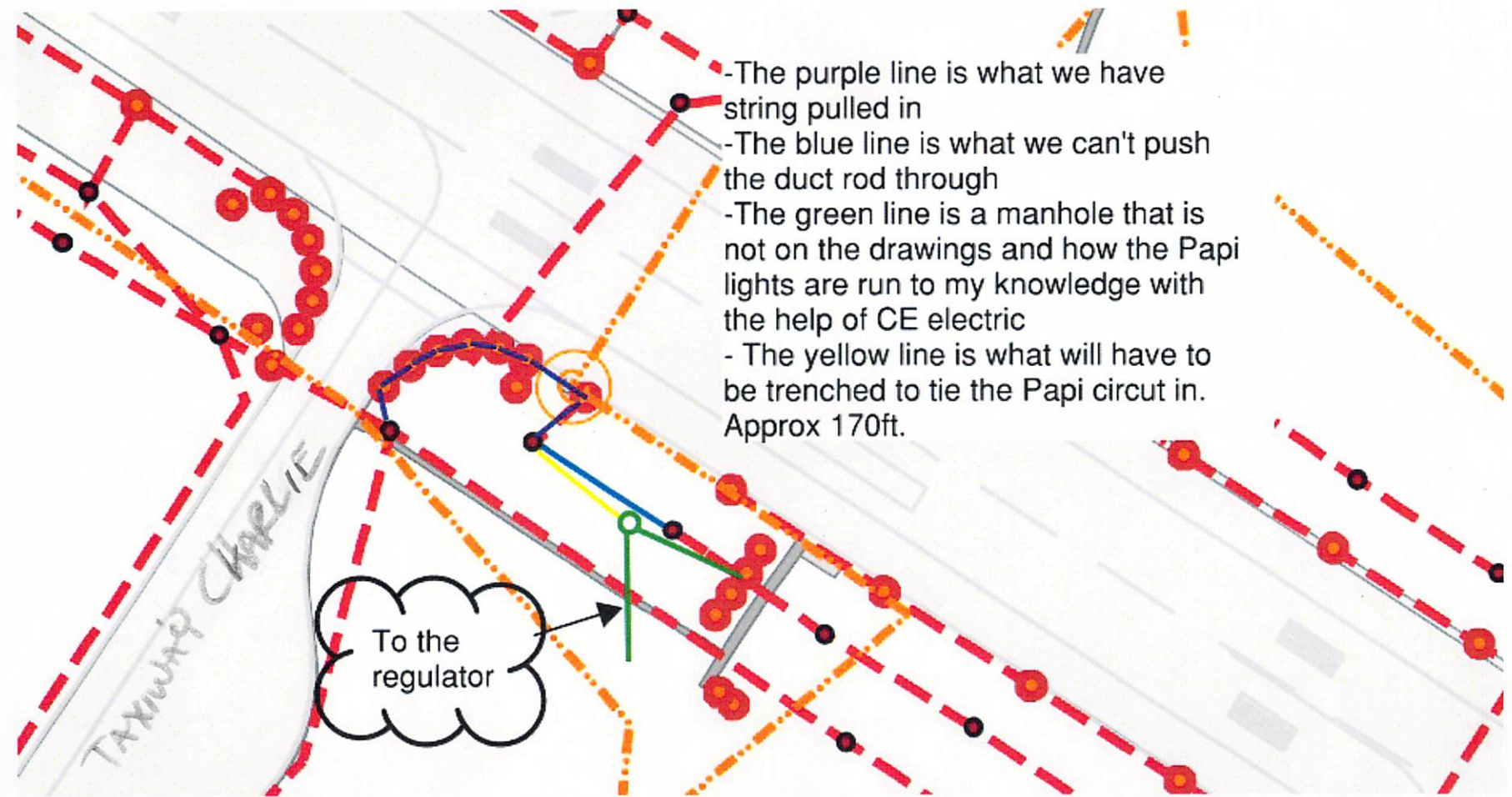


Work Required in Manholes Along the West Side of the Runway and at South PAPI Fixture Location

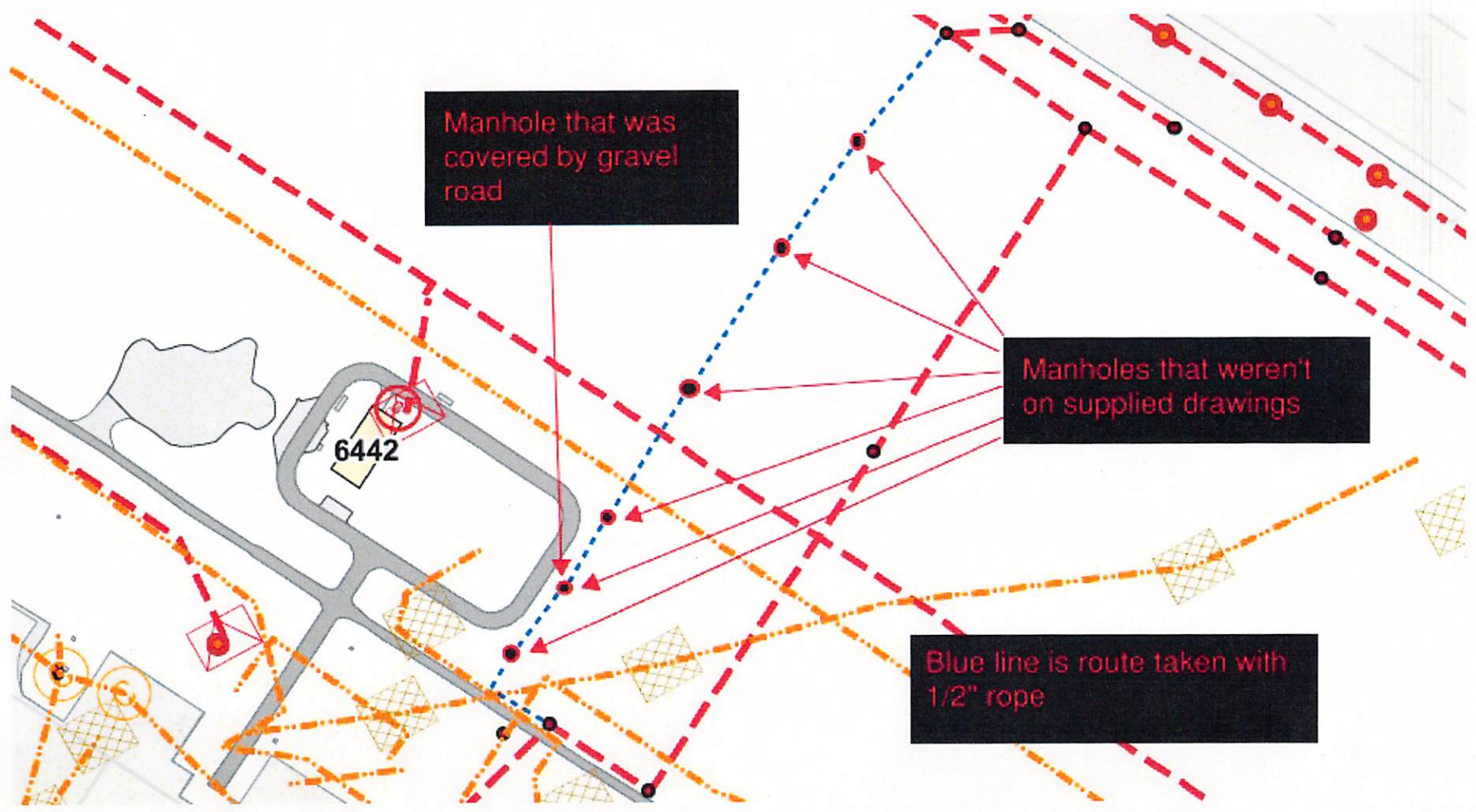
South PAPI







SUCCESSFULLY PULLED ROPE FROM LIGHTING VAULT TO NORTH PAPI LOCATION & TO 170' SHORT OF SOUTH PAPI LOCATION AS BUILT DRAWINGS



Manhole that was covered by gravel road

Manholes that weren't on supplied drawings

Blue line is route taken with 1/2" rope

6442