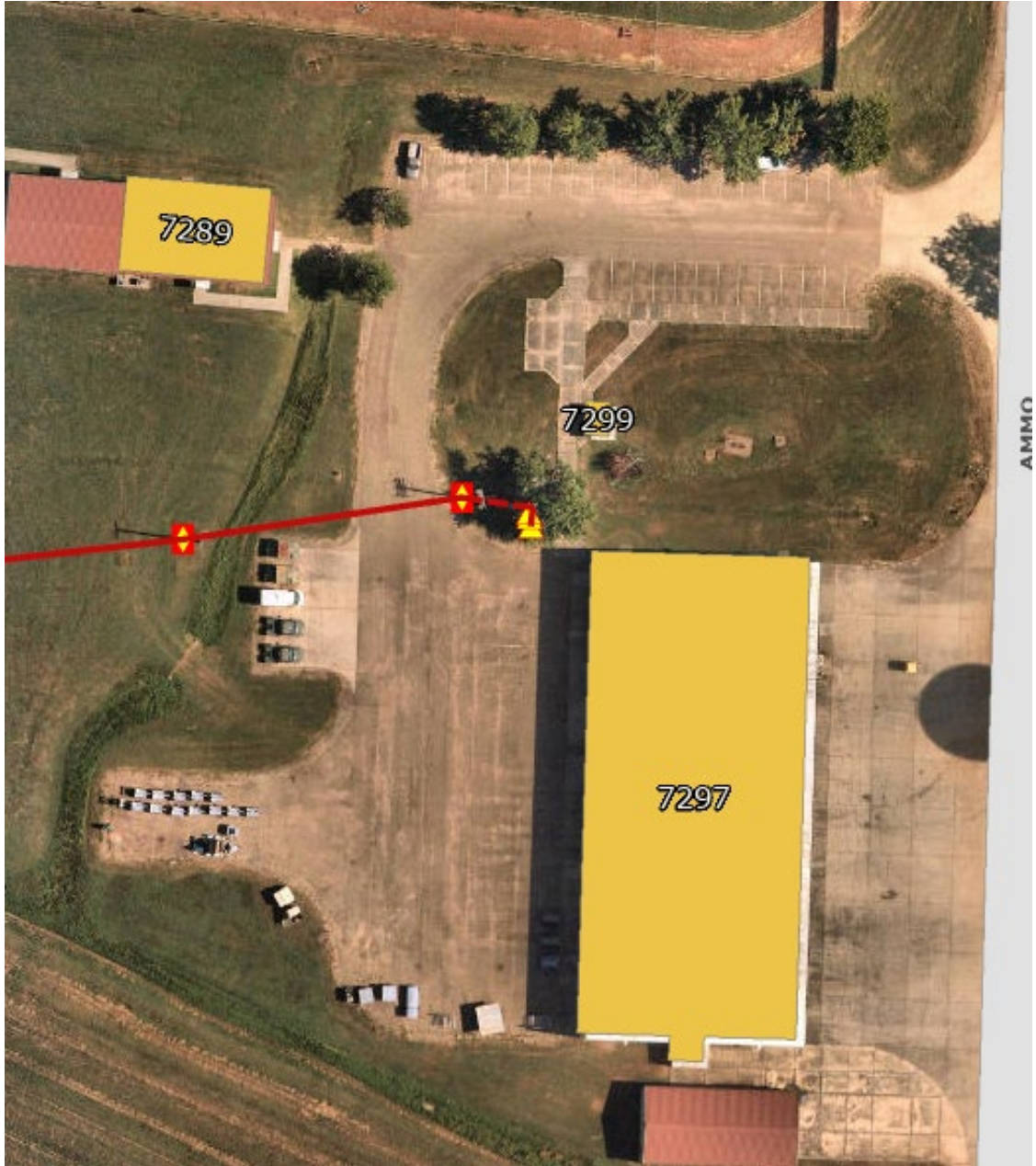


Attachment 2
OPP#1148089, Resurface Trailer Maintenance Lot B7297
Utilities and Drawings, Dated 08 January 2025

ELECTRICAL INFRASTRUCTURE

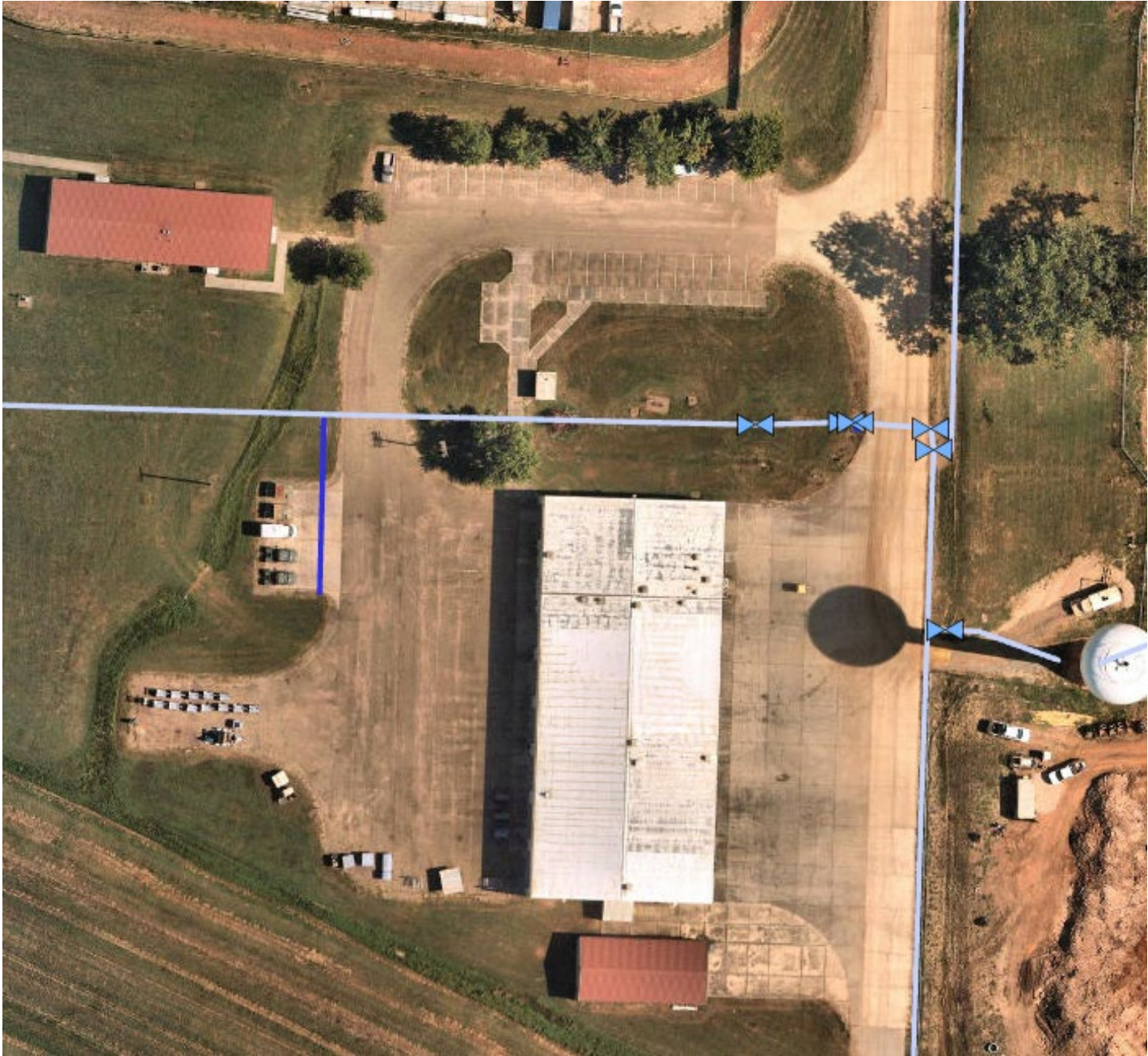


SEWER





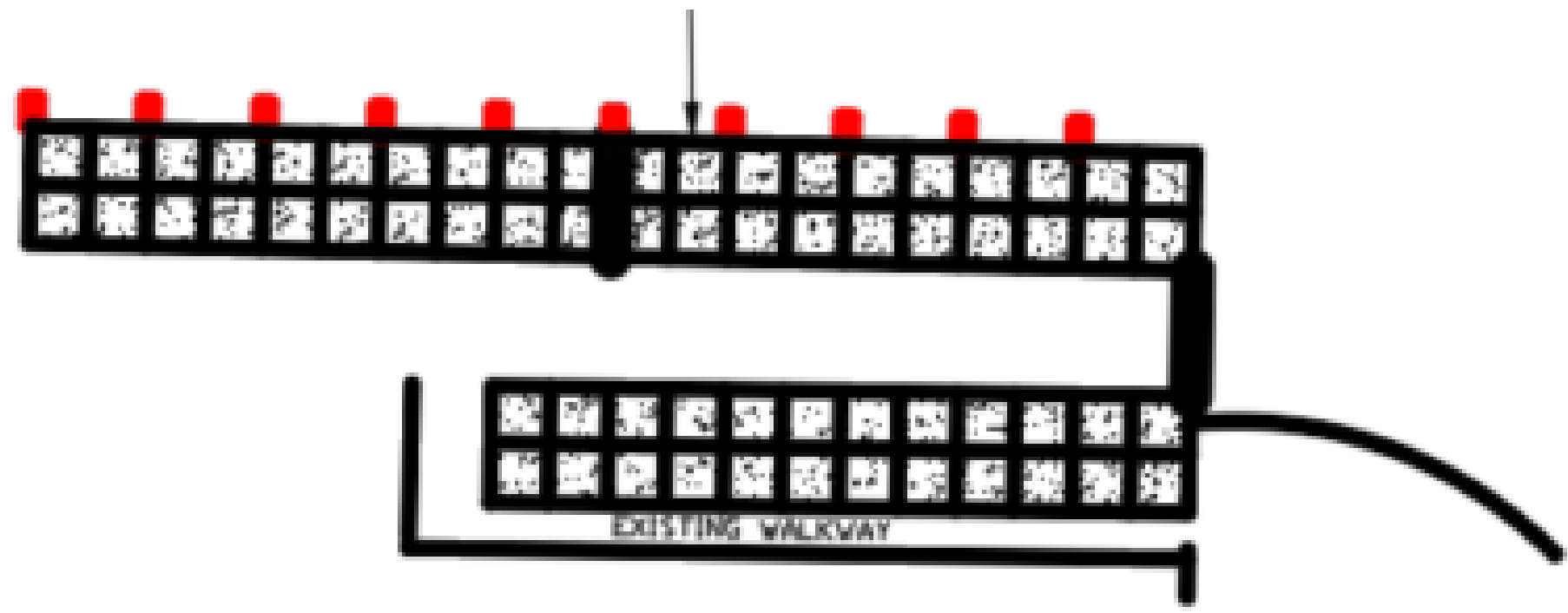
WATER



OVERALL PLANNED CONSTRUCTION



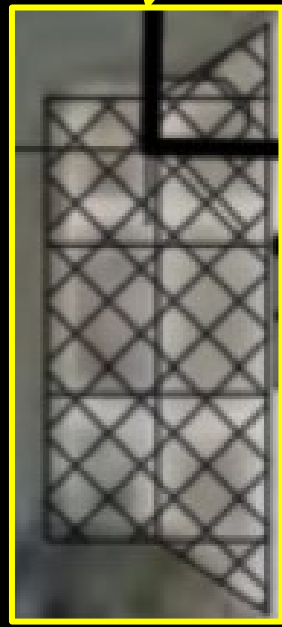
4" TH CONCRETE PAVEMENT AREAS

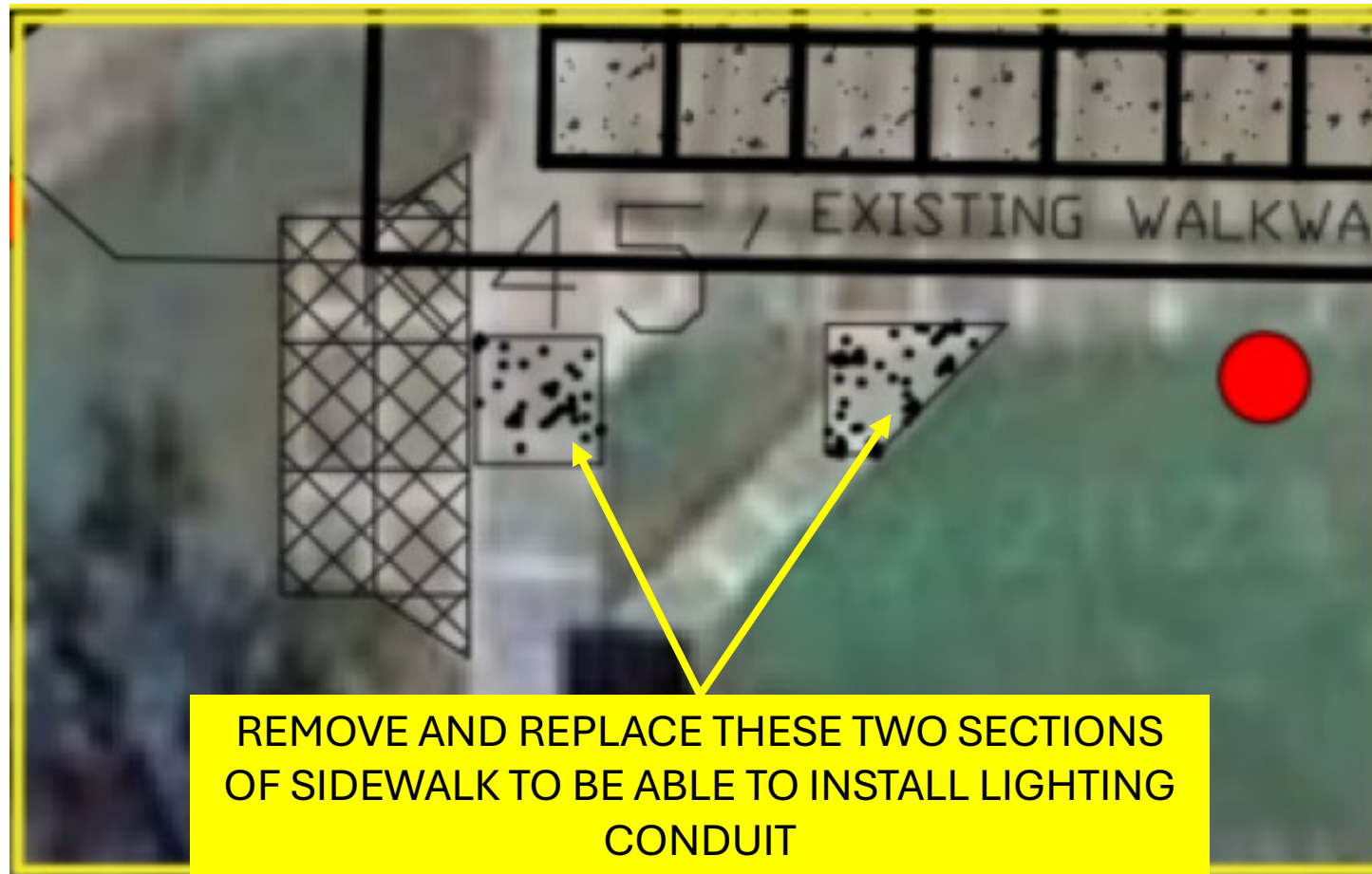


DEMO CONCRETE PAD



DEMO THIS PAD AND BACKFILL WITH DIRT AND COVER WITH SOD



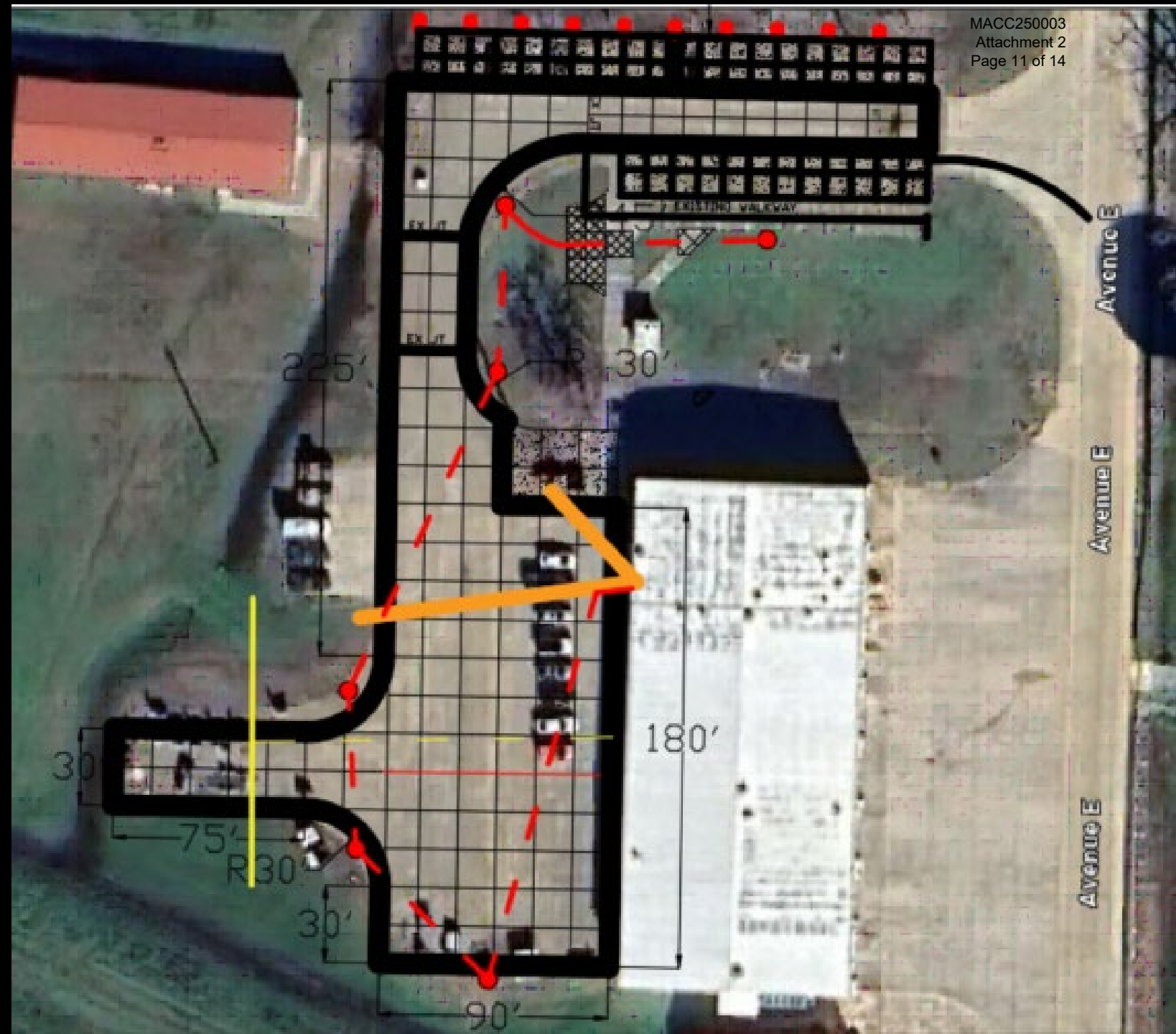




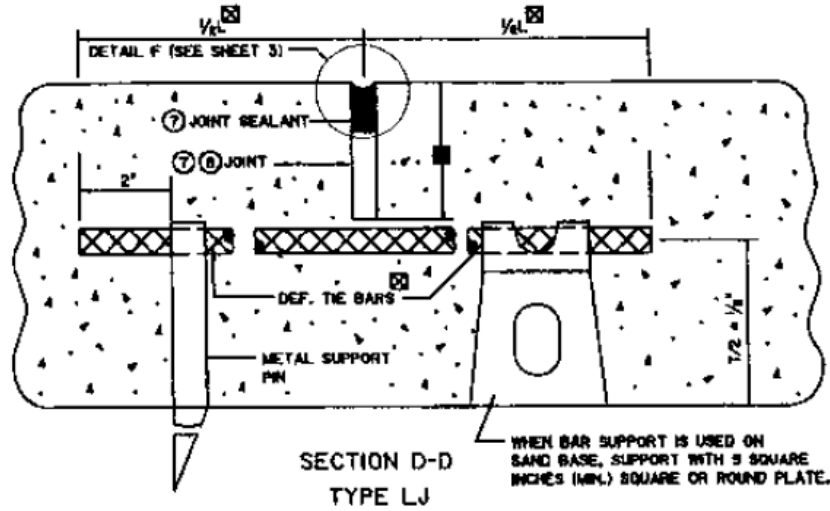
———— **COMM LINE**

———— **GAS LINE**

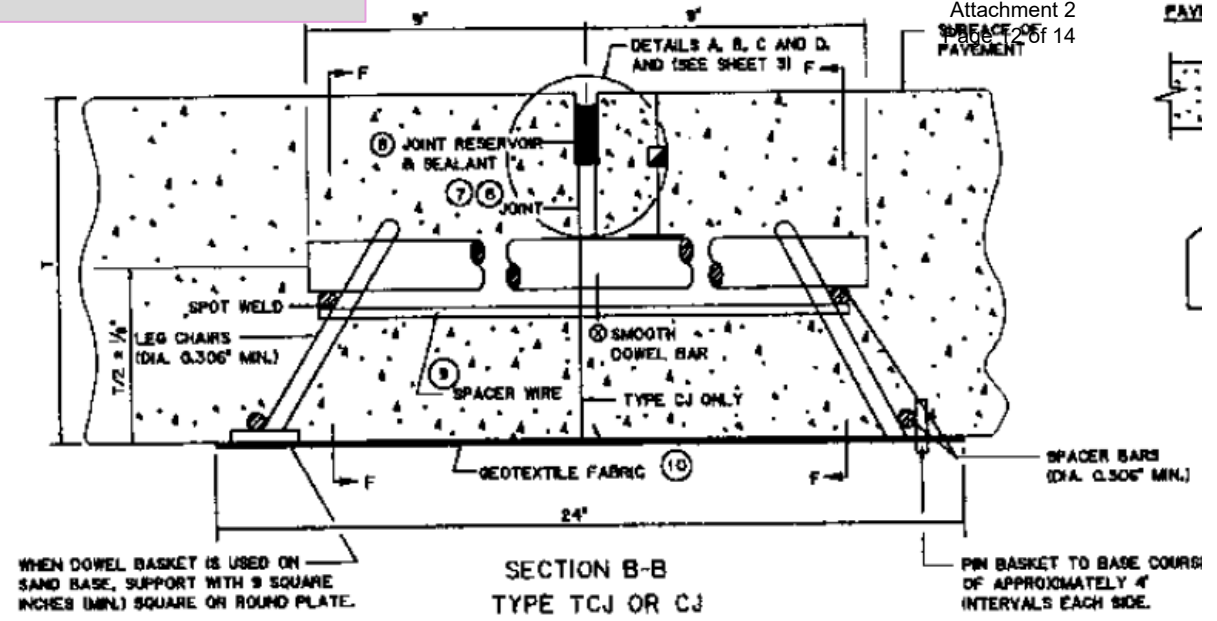
- - - - **PROPOSED
ELECTRICAL
WIRING FOR
LIGHTING**



STANDARD PAVEMENT DETAILS

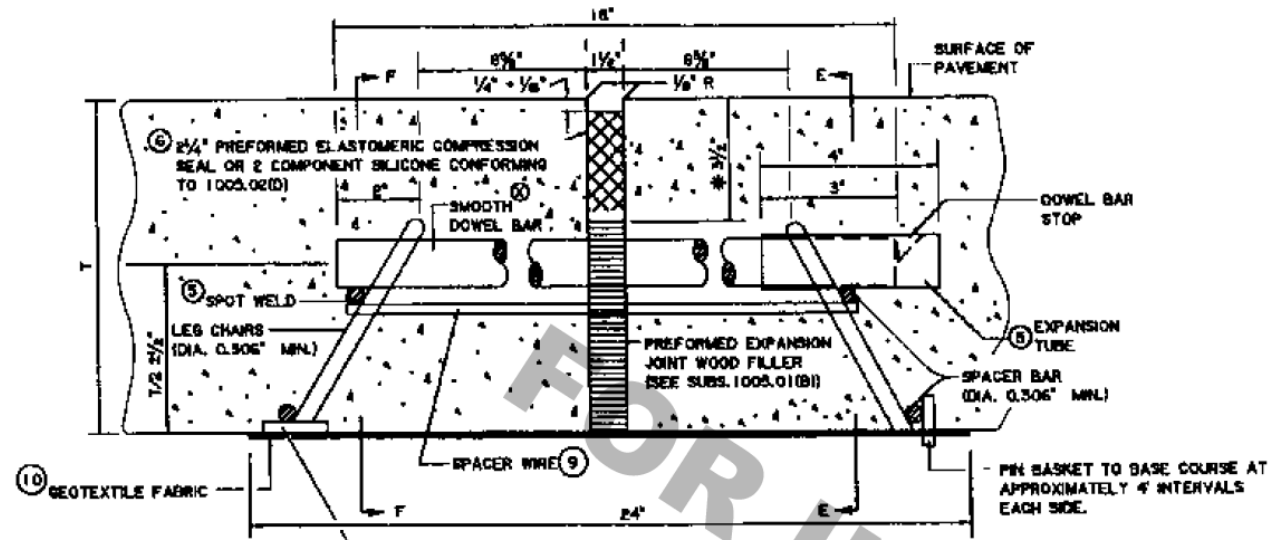
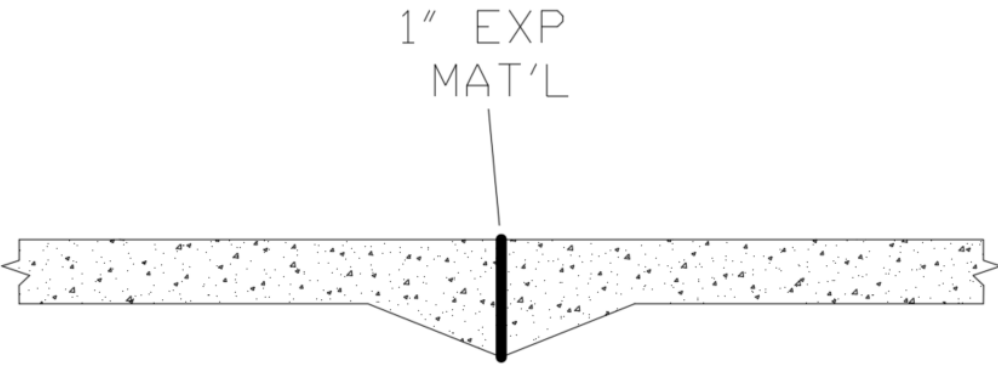


REQUIRED WHEN PAVEMENT WIDTH EXCEEDS (5') (SEE NOTE 7)



WHEN DOWEL BASKET IS USED ON SAND BASE, SUPPORT WITH 9 SQUARE INCHES (MIN.) SQUARE OR ROUND PLATE.

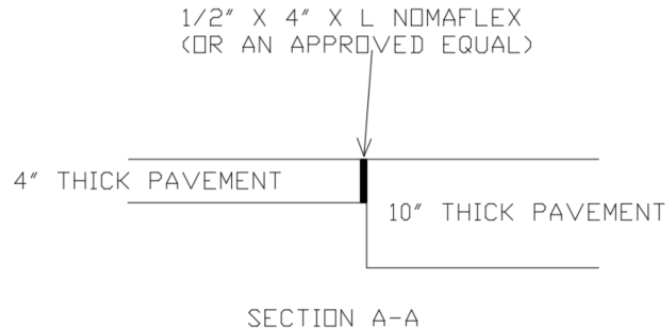
(TRANSVERSE CONTRACTION JOINT OR CONSTRUCTION JOINT)



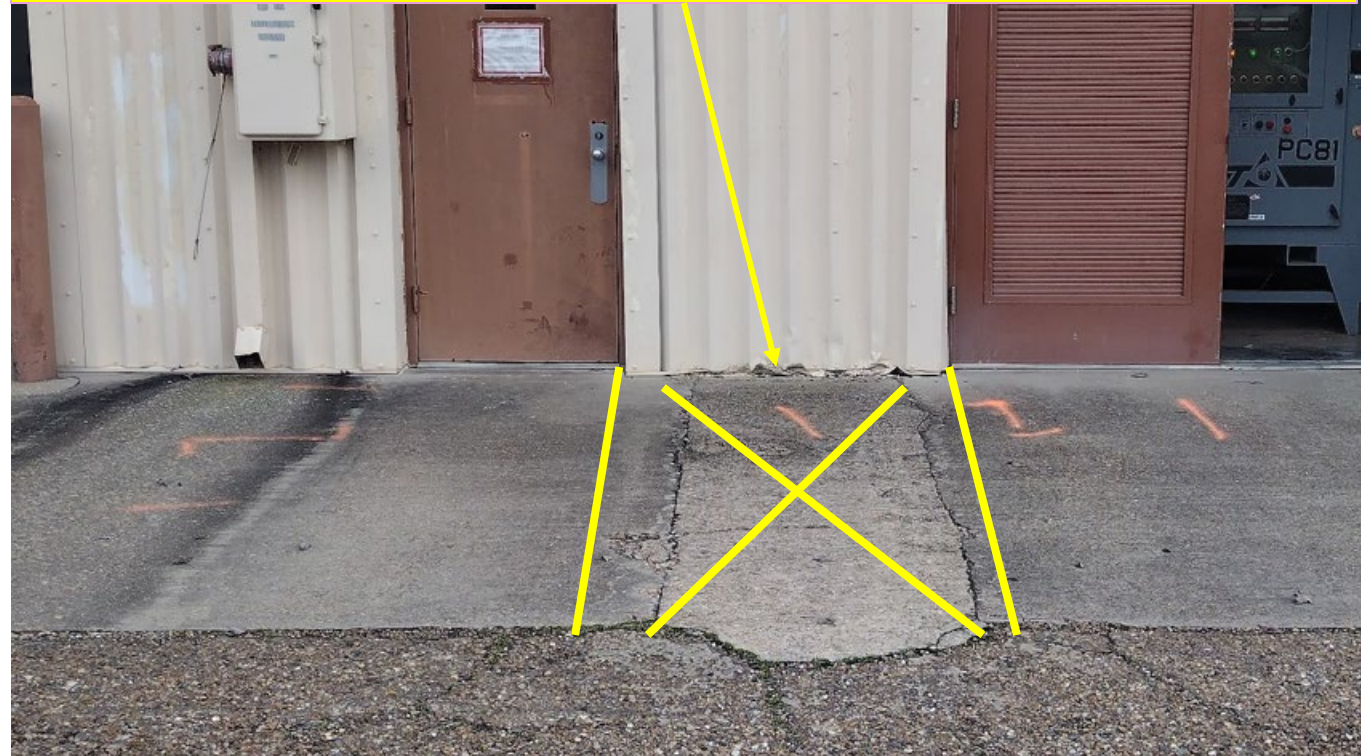
WHEN DOWEL BASKET IS USED ON SAND BASE, SUPPORT WITH 9 SQUARE INCHES (MIN.) SQUARE OR ROUND PLATE.

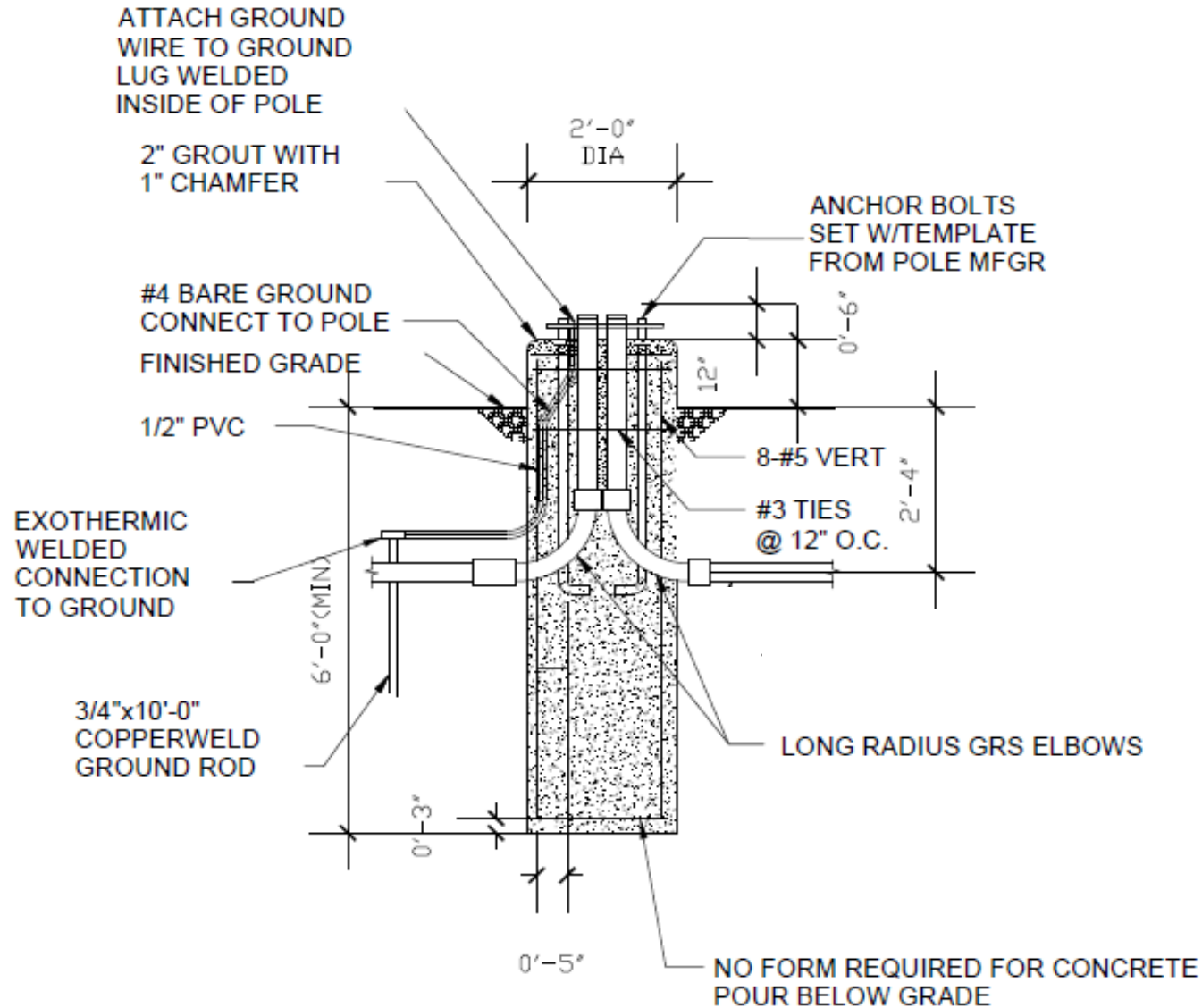
SECTION A-A (13)
TYPE EJ
3" FOR 6" PAVEMENT
SEE TABLE 1

PAVEMENT DETAILS



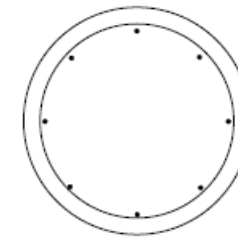
SAWCUT PAVEMENT AS INDICATED ON THE OUTSIDE OF THE MECHANICAL ROOM, REMOVE, CONCRETE, LAY CONDUIT AND REPOUR BACK WITH SIX INCHES OF 4,000 PSI CONCRETE. PROPER COMPACTION SHALL BE ATTAINED PRIOR TO REPOURING





NOTES: THE ATTACHED FOOTING IS GENERIC, MINOR FIELD MODIFICATIONS MIGHT BE REQUIRED

1. TOP OF FOOTING TO BE 24 INCHES ABOVE GROUND LEVEL
2. ANCHOR "J" BOLTS TO UTILIZE LEVELING NUTS AND HAVE THREE THREADS ABOVE THE TOP OF THE TOP NUT
3. "J" BOLTS, AND RELATED HARDWARE TO BE HOT DIPPED GALVANIZED
4. #3 SPIRAL AROUND #4 REINFORCING STEEL FOR FOOTING REINFORCEMENT



FOOTING DETAIL
NTS
TOP VIEW